

Kingsquarter

Maidenhead • • SL6 1AN

Guide Price: £695,000



coopers
est 1986

Kingsquarter

Maidenhead • • SL6 1AN

This spacious three-storey family home offers generous and versatile accommodation throughout, arranged over three well-designed levels. The ground floor features a large open-plan kitchen/dining area, utility and useful garage, while the first floor includes a bright sitting room and two bedrooms along with a family bathroom. The second floor provides three further bedrooms, including two with en-suites, offering excellent flexibility for guests or family. The layout is ideal for modern living, with well-proportioned rooms and plenty of storage. Set within a desirable gated community, the property enjoys driveway parking, convenient access to local amenities, outstanding schools, green spaces and excellent transport links.

No Chain

Gated Development

Spanning Over Three Floors

Five Generous Bedrooms

Open Plan Kitchen & Dining

Spacious Living Room

Three Bathrooms

Catchment To Two Outstanding Schools

Walking Distance To Elizabeth Line

Garage & Driveway

These particulars are intended as a guide and must not be relied upon as statements of fact. Your attention is drawn to the Important Notice on the last page.





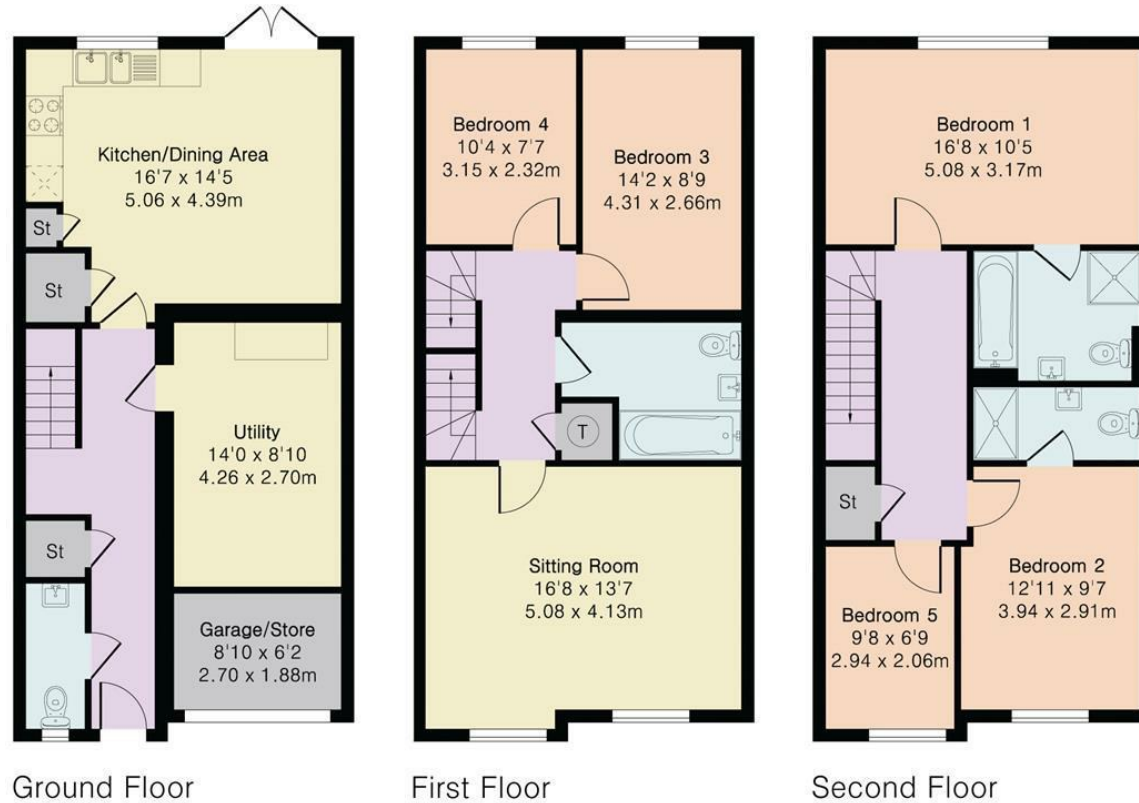
**Approximate Gross Internal Area 1703 sq ft - 159 sq m
(Excluding Garage/Store)**

Ground Floor Area 525 sq ft – 49 sq m

First Floor Area 589 sq ft – 55 sq m

Second Floor Area 589 sq ft – 55 sq m

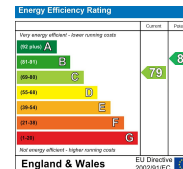
Garage/Store Area 55 sq ft – 5 sq m



coopers
est 1986

**42 Queen Street, Maidenhead,
, SL6 1HZ**
maidenhead@coopersresidential.co.uk

CoopersResidential.co.uk



Important Notice: These particulars, whilst believed to be accurate are set out as a general outline only for guidance and do not constitute any part of an offer or contract. Intending purchasers should not rely on them as statements or representation of fact, but must satisfy themselves by inspection or otherwise has the authority to make or give any representation or warranty in respect of the property.